

Corner Protector / Edge Protectors



HI-TECH WEBBING SLEEVES

Heavy duty sling webbing is used for high abrasion applications



KOOPER SLEEVING

Light weight with a smooth abrasion resistant surface

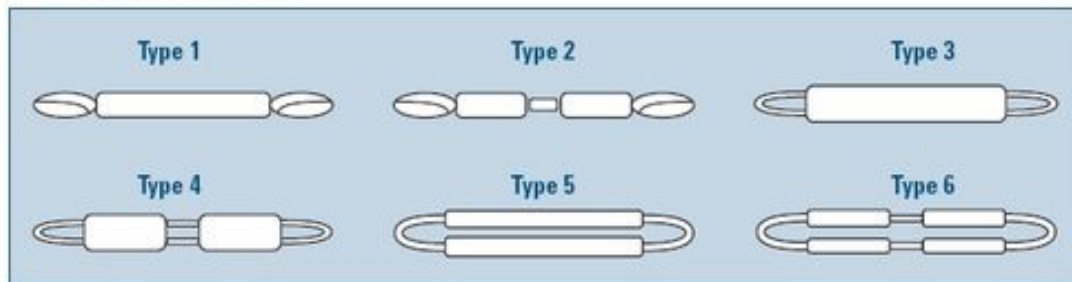


LAY FLAT HOSE

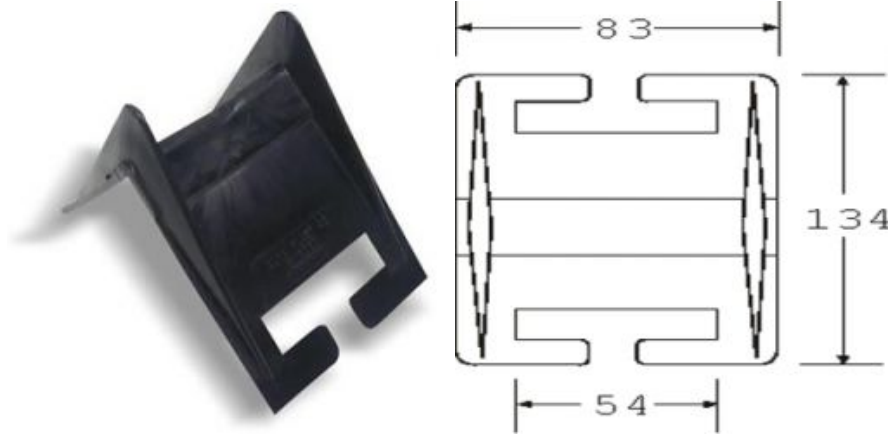
Light weight PVC moisture resistant Hose



SLEEVE CONFIGURATIONS



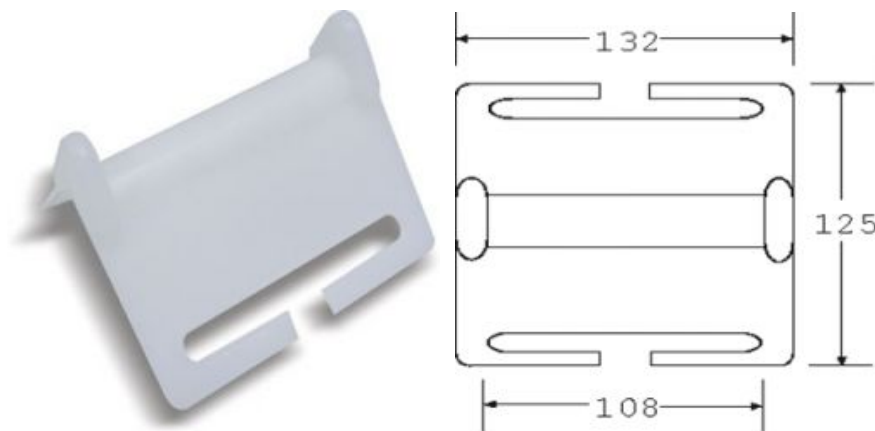
Model: CP50



Description: Corner Protector (Edge Protector) for 50mm webbing. The gap in protector allows it to be placed onto webbing while in use. Helps protect the webbing from sharp edges. Suitable for webbing up to 50mm wide.

CP100 - Corner Protectors / Edge Protectors

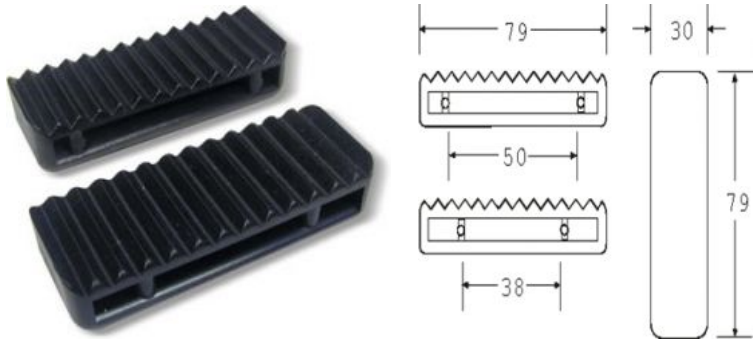
Model: CP100



Description: Plastic Corner Protector (Edge Protector) for webbing upto 100mm. Gap in Protector allows it to be placed onto strap while in use. Helps protect the webbing from sharp edges. Suitable for webbing up to 100mm in width.

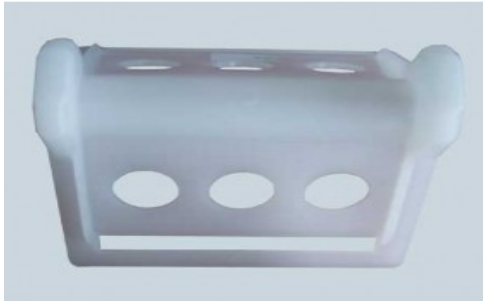
TP3500 / TP5000

Model: TP3500 / TP5000



Description: Plastic Type Protectors TP3500 for 35mm webbing and TP5000 for 50mm webbing

2" - 4" Plastic Corner Protector



White plastic
 Protector for 2" to 4" webbing
 Prolongs service life of webbing
 Protects cargo from webbing

2" Steel Corner Protector (Chain Cap)



Galvanized steel
 2" Corner Protector (Chain Cap)
 Protects cargo from chains

4" Steel Corner Protector (For Webbing)



Galvanized steel
 4" Corner Protector (For Webbing)
 Prolongs service life of webbing
 Protects cargo from webbing